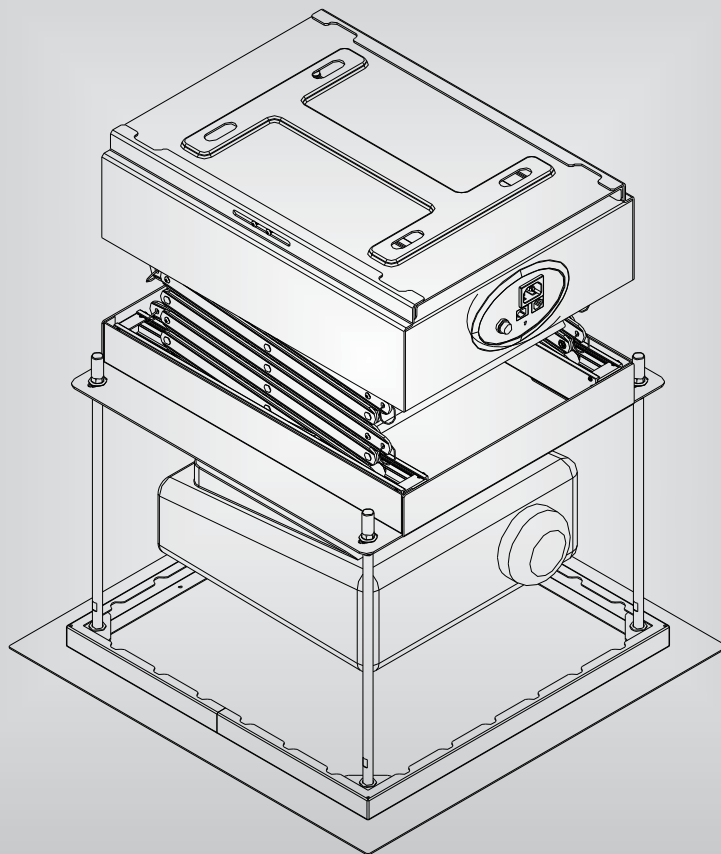





Projector Lift Installation/Operating Instructions



PLEASE READ THROUGH ALL
INSTRUCTIONS BEFORE PROCEEDING

▼Safety guide:

-  1.Check expansion bolts are firmly fixed to the concrete ceiling before install the Projector Lift.
- 2.Do not obstruct the projector Lift with any object under the travelling tray when it is lowering. Blocking the tray from normal travelling will cause damage to the winding tape and improper operation to the projector Lift.
- 3.The Video Projector must be installed at the center of the Lift to keep the unit in level. Inclined and unbalance d travelling the projector might cause risk.
- 4.Strictly follow Lift Capacity of each model. Overloaded operation is dangerous.
- 5.No body part or any object can be inserted to the scissor portion of the Lift to avoid serious injury or damage.
- 6.Standing underneath the projector Lift during installation and testing is prohibited.
- 7.Keep all individuals and obstructions clear from the Lift path during operations.

▼Operation Condition :

- 1. Temperature : -10℃ to +40℃.
- 2. Relative humidity (Indoor) : Below 95%.
- 3. Operating area : Indoor without corrosive, flammable or explosive gas.
- 4. Operating Voltage : AC 220V±10% or 120V±10%.
- 5. Violent vibration and impact is prohibited.

INDEX

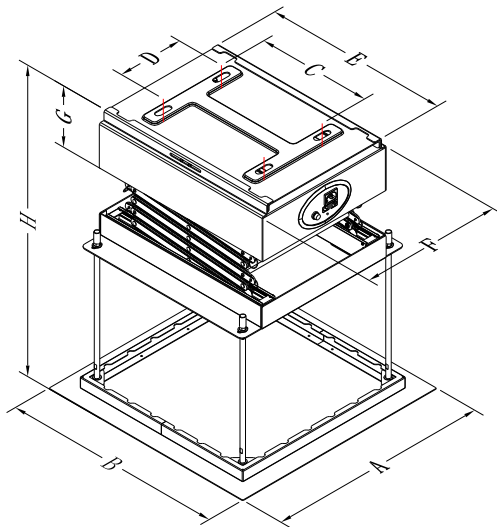
Installation and adjustment.....	P2—P4
Control mode.....	P5
Fault diagnosis and exclusion.....	P6
Maintenance and protection.....	P7—P8
Circuits and accessories.....	P9

▼Functions and characteristics

- Intelligent integration 868MHz wireless Trigger control system greatly enhances the ability of anti-interference and reliability to operate the Projector Lift and Electric projection screen synchronously.
- RS485 interface seamlessly integrates with your computer, the Projector Lift and the Electric projection screen.
- Operating with high performance low noise motor.
- Unique linkage mechanism eliminates the phenomenon of gravity movement.
- Precision positioning : Equipped with HANZ travel limit device provides accurate positioning and convenient adjustment.
- Special craft and material Winding tape keeping the stretchability less than 3‰.
- Reinforced Chassis ensures the strength of the Projector Lift, also reduces the noise of the unitment.

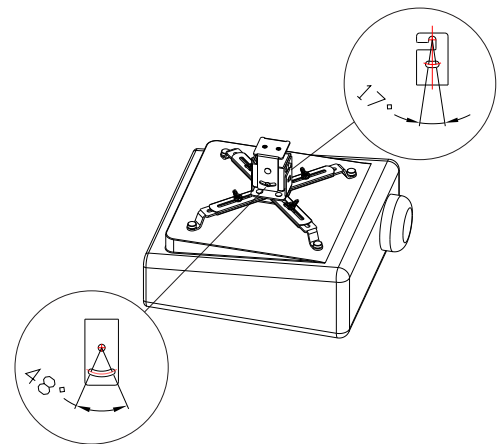
▼Technical Parameter(Figure 1)

Model	Travel Distance (L)	Travel time (S)	Lifting capacity (LF)	G.W (kg)	N.W (kg)	Lowered/open Height(H ₁)	Retracted/closed Height(H)
EPL-1A100	100cm	40s	30kg	34kg	26kg	150.5cm	50.5cm
EPL-1A150	150cm	60s	30kg	35kg	27kg	205.5cm	55.5cm
EPL-1A200	200cm	80s	30kg	36kg	28kg	261.0cm	61.0cm
EPL-1A250	250cm	100s	30kg	37kg	29kg	317.5cm	67.5cm



$$H_1 = H + L$$

(Figure 1)



(Figure 2)

▼Installation parameter(Figure 1)

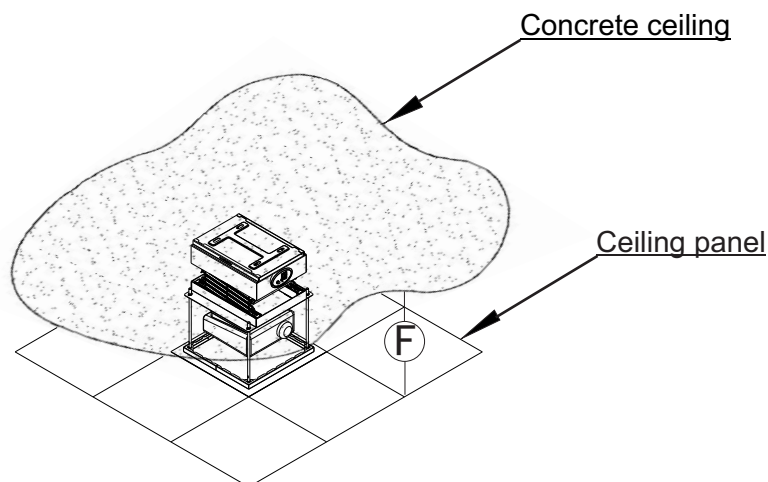
Model	Ceiling panel A(width)	Ceiling panel B(length)	Assembling hole distance C (length)	Assembling hole distance D (width)	Top unit E(length)	Top unit F(width)	Top unit G(height)
EPL-1A100	50cm	50cm	26cm	15cm	42cm	32cm	12.2cm
EPL-1A150	50cm	50cm	26cm	15cm	42cm	32cm	12.2cm
EPL-1A200	50cm	50cm	26cm	15cm	42cm	32cm	12.2cm
EPL-1A250	50cm	50cm	26cm	15cm	42cm	32cm	12.2cm

▼ Installation instruction

- Make sure there is adequate space for installation and operation.

If the space between Concrete ceiling and ceiling panel $F \geq H_1$.

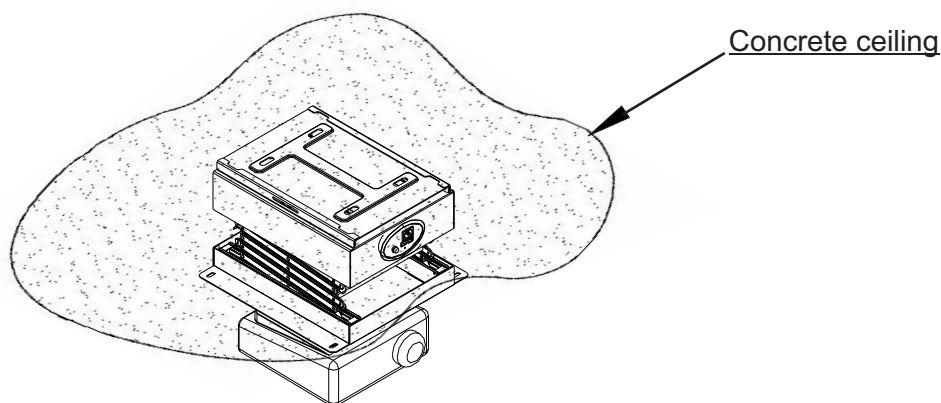
The ceiling panel can be installed. (figure 3)



(Figure 3)

- If the space between Concrete ceiling and ceiling panel $F < H_1$.

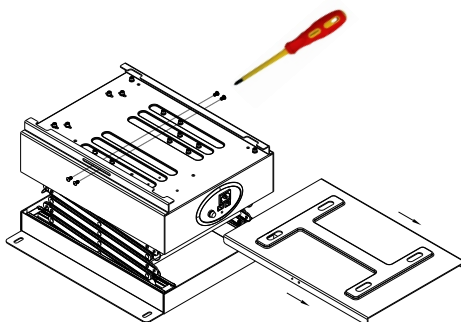
The ceiling panel can be not installed. (figure 4)



(Figure 4)

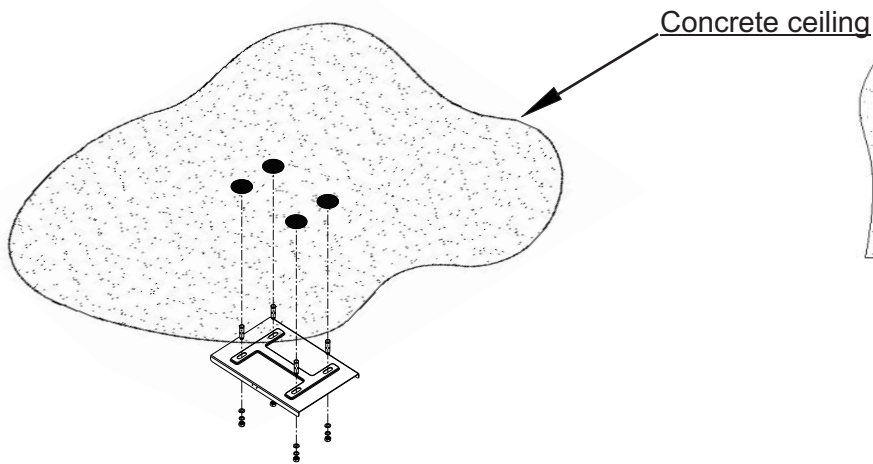
▼ Installation and adjustment

- Loosen the side screws and draw out the connecting plate at the top of the unit. (figure 5)

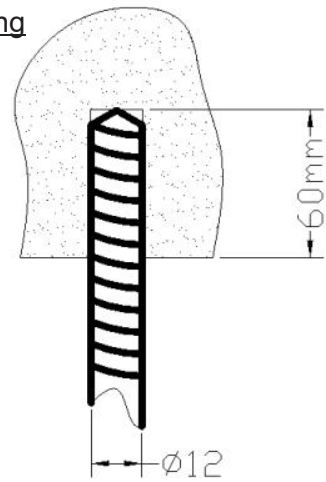


(Figure 5)

- After confirming the installation position , please drill four holes (figure 6).
Figure 7 showing the depth of hole and the diameter of the head driller.



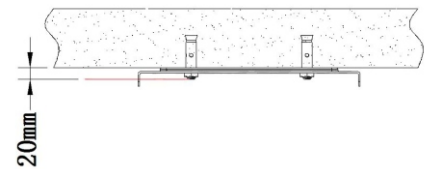
(Figure 6)



(Figure 7)

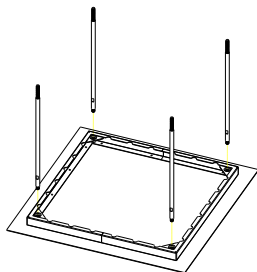
- Punch the expansion bolt into the drilled hole, place the connection plate to the right position and tighten the nut to the expansion bolt.(Figure 8)

- ⚠ Caution :**
1. Make sure to install the Connection plate to an even surface of concrete ceiling.
 2. Expansion bolt must be fixed to the concrete ceiling firmly and leave 20mm(min) outside the ceiling.

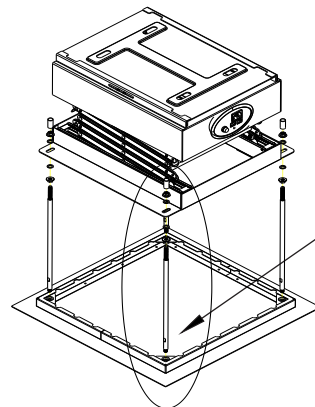


(Figure 8)

- Insert the threaded mounting rods to the four corners of the Ceiling panel and tighten(Figure 9). Place nut and flat washer to the top of threaded mounting rods, insert the rods in correct position to the travelling tray of the Projector Lift . Place flat washer and nut from the upper part of the tray then tighten the nut.(Figure 10).

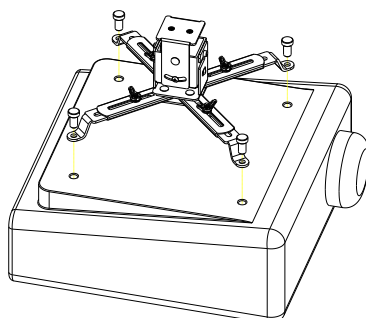


(Figure 9)

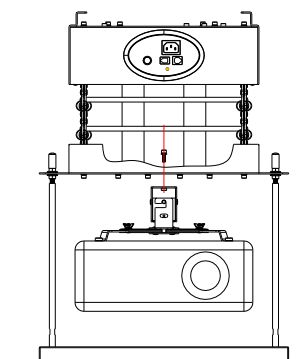


(Figure 10)

- The video projector should be suspended from the travelling tray with a ceiling mounting bracket.
1.Match the 3 or 4 fixing holes between the projector and the bracket arms. Tighten with standard screws supplied with the bracket. (Figure 11)
2.Attach the bracket with projector to the bottom side of travelling tray.(Figure 12)

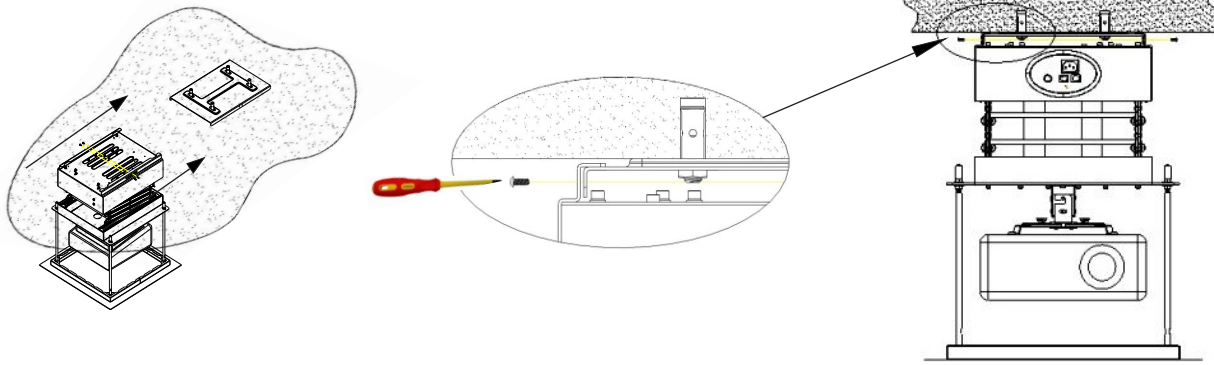


(Figure 11)



(Figure 12)

- Attach the Lift to the connecting plate from the concrete ceiling :
Follow the arrow direction(Figure13), match the rail on top of the Lift to the edge of the connecting plate then push it to proper position and tighten the screws.

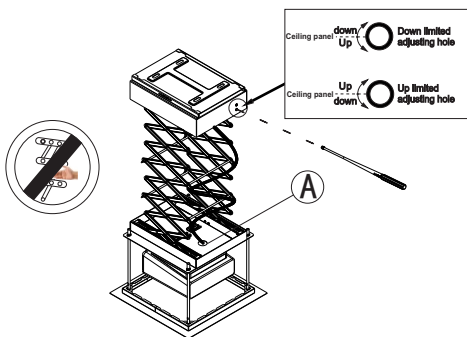


(Figure 13)

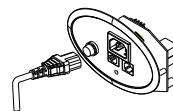
- Connections should be made in accordance with wiring diagram. Wiring should comply with national and local electrical codes. All operating switches should be “OFF” during installation and before power is connected. Connect Signal and Power cables to Video projector through a round hole of the travelling tray where the projector has mounted on. Arrange the cables with cable rings along the scissor mechanism to the upper housing of the projector Lift(Figure 14). Plug the power cable to the power supply on the Lift.(Figure 15)

Run the Lift upward until ceiling panel stops at the highest position. Make sure the lower unit should keep level with the ceiling(Figure 17). If ceiling panel is not required due to no false ceiling surrounding the Lift , total retracted height of the projector Lift should $\geq H$ (see Figure 17, and refer to Technical Parameter table in page 1.)To lock the limited position of upward by tuning the “Up Limited Adjusting Device” with a standard tuning rod supplied by manufacturer.

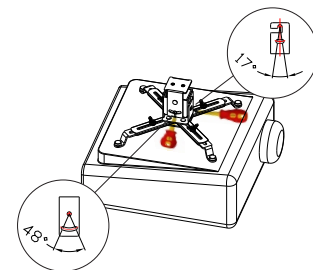
Run the Lift downward to “show” position. When a perfect projection image from the projector to the screen has achieved, lock the height with “Down Limited Adjusting Device” (Figure 18). Downward travelling distance should be within the range of “Lowered height(H_1)” indicated in Technical Parameter table in page 1. User can adjust the projection angle manually by adjusting the projector bracket to get an ideal image on the screen(Figure 16).



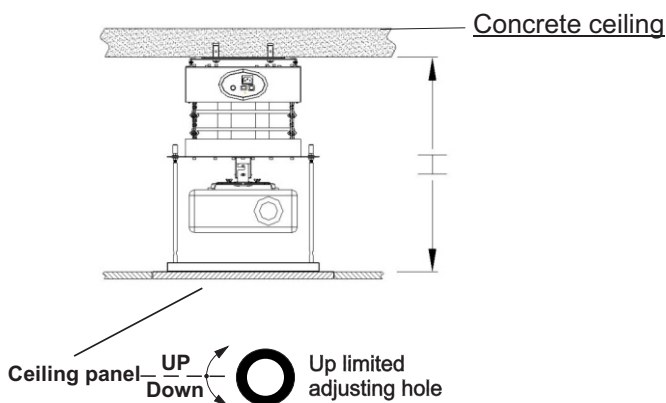
(Figure 14)



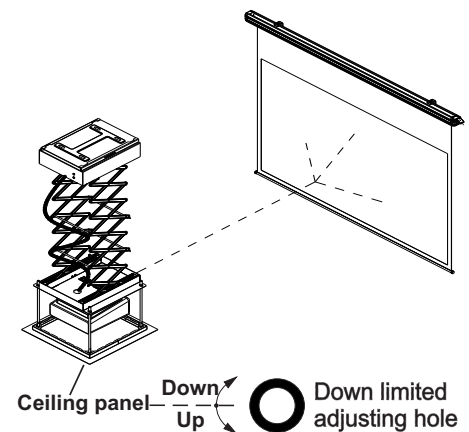
(Figure 15)



(Figure 16)



(Figure 17)

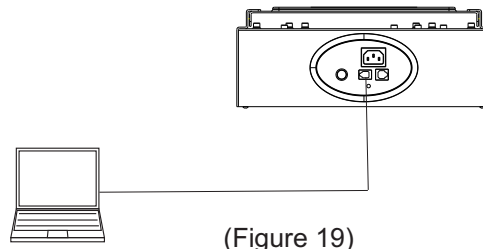


(Figure 18)

▼ Control mode

Computer control

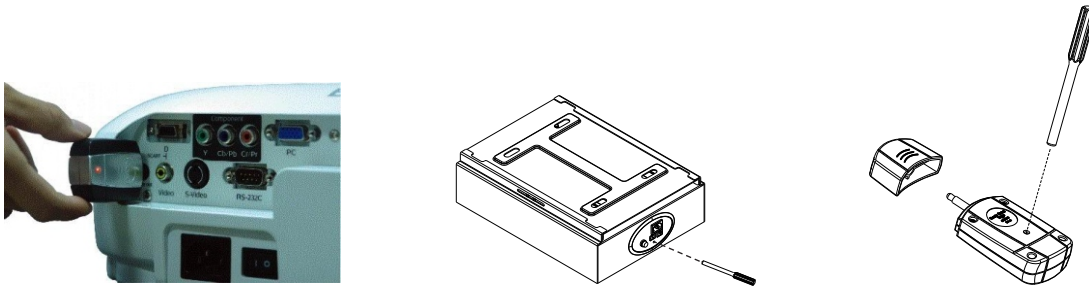
- Plug RS485 Signal cable to the RS485 port of Control Panel on the front hand side of the Lift at the upper housing and connect to the RS485 interface of the computer. (Figure 19). User is now can operate the projector Lift up/down and stop by the computer.



(Figure 19)

Trigger control

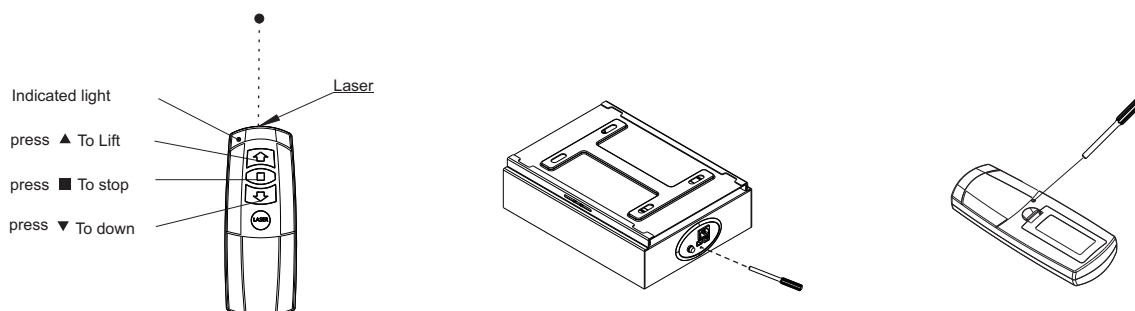
- To integrate our wireless Trigger control with our Projector Lift , please process the following:
Press the hole of receiver on the panel of the Lift for 3 seconds with our standard Code learning needle, indicated by a light flash on the Trigger control unit.
Then press the hole on the back of Trigger unit for 3 seconds, the indicating light become steadily from flashing.
Code learning has completed. The Projection Lift will descend to a desired position when the projector is power-on.
Projector Lift will return to the hidden position automatically when the projector is power-off(Figure 20).



(Figure 20)

Remote control

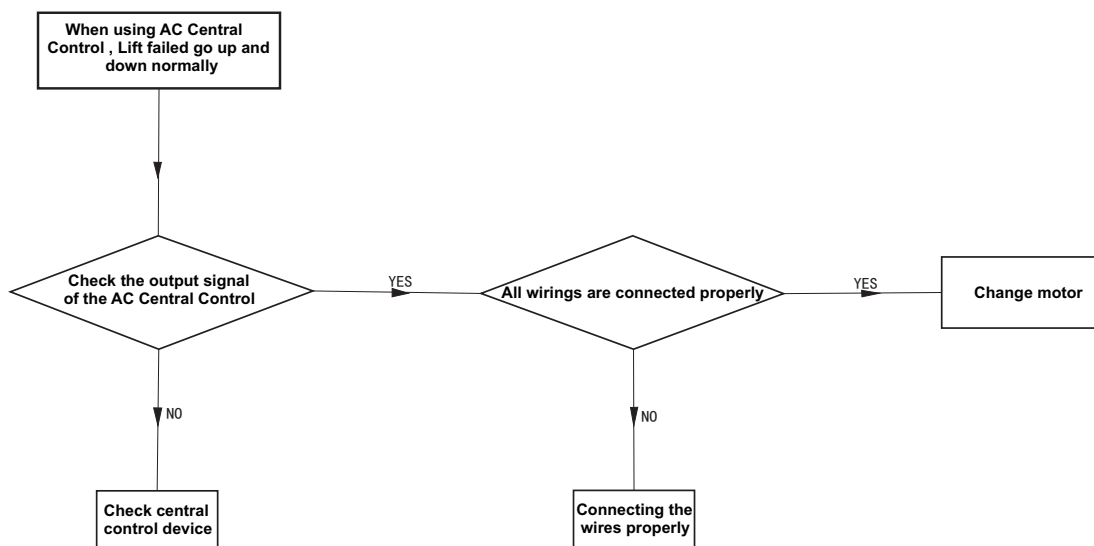
- Remote control system is preset by factory and ready for use. If you want to control another projector Lift with our hand held transmitter, you will need to proceed with code learning procedure:
Press the hole of receiver on the panel of the new Lift for 3 seconds with our standard Code learning needle , indicated by a light flash on the hand held transmitter.
Then press the hole on the back of hand held transmitter for 3 seconds, the indicating light become steadily from flashing. Code learning has completed.(see figure 21)
Our Intelligent integration 868MHz built-in radio frequency(RF) remote control system greatly enhances the ability of anti-interference and reliability to operate the Projector Lift within 40 meters. (Cement wall will reduce the transmission distance).



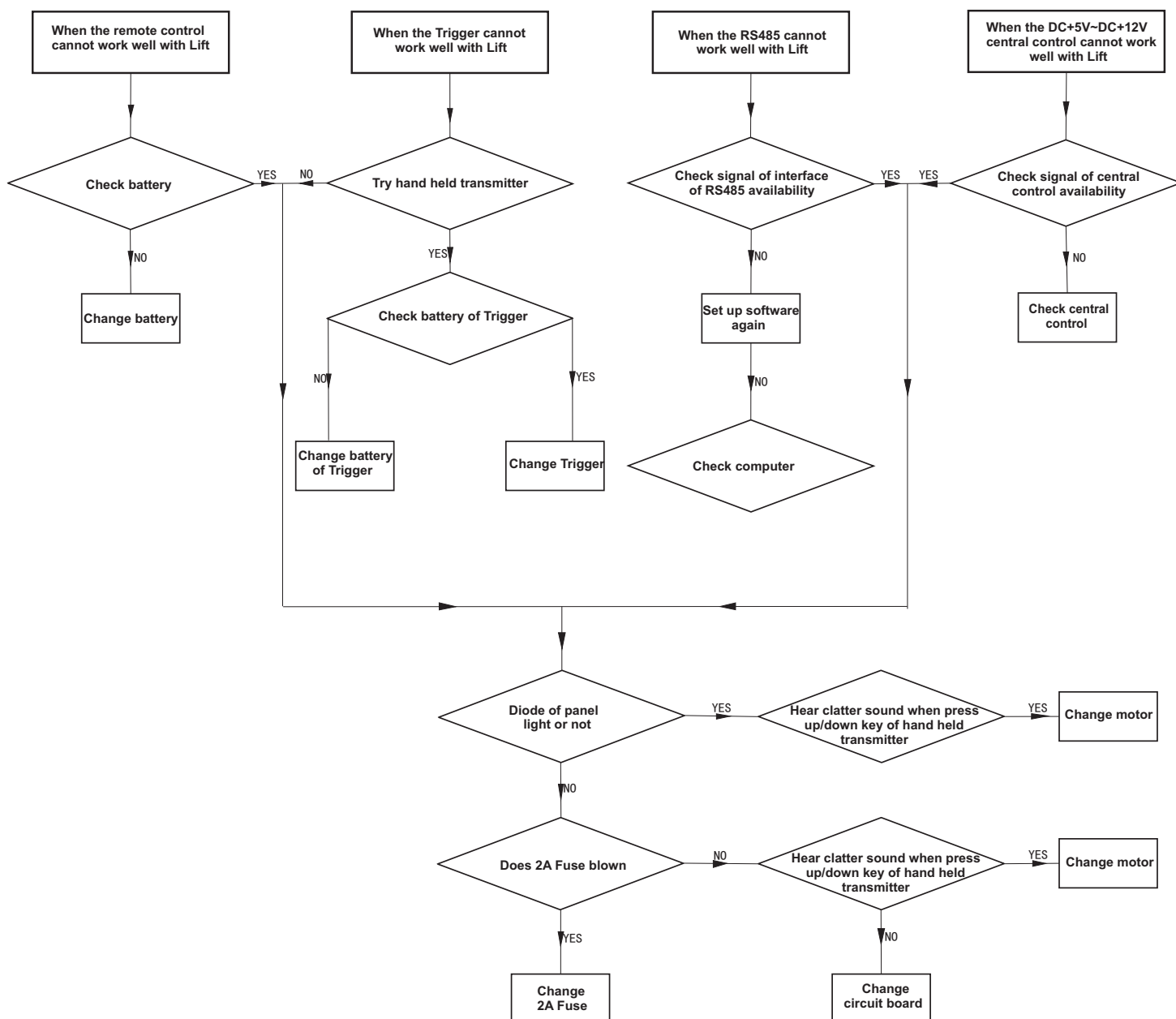
(Figure 21)

▼ Fault diagnosis and exclusion

● AC Central Control



● Remote Control



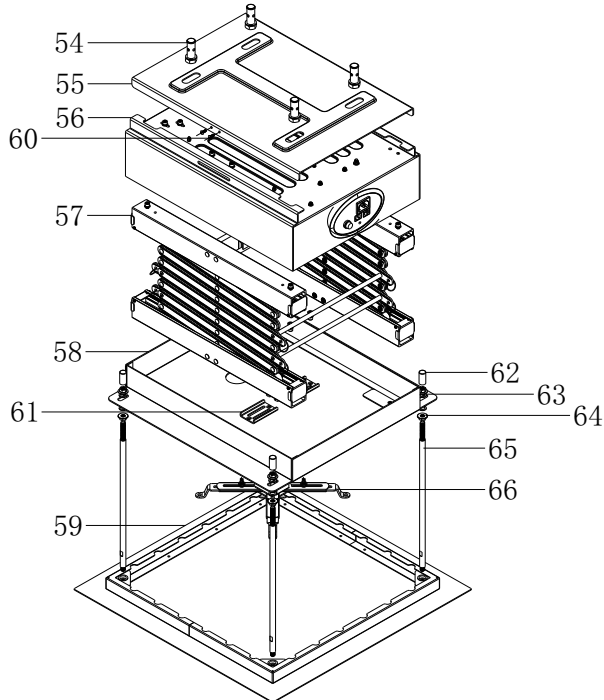


⚠ Please refer to P5 to adjust angle of projector when the angle changed under working together with projector.

Note: Please find local distributors or professionals, for avoiding make problem more serious. Dismantle Lift by oneself is not allowed.

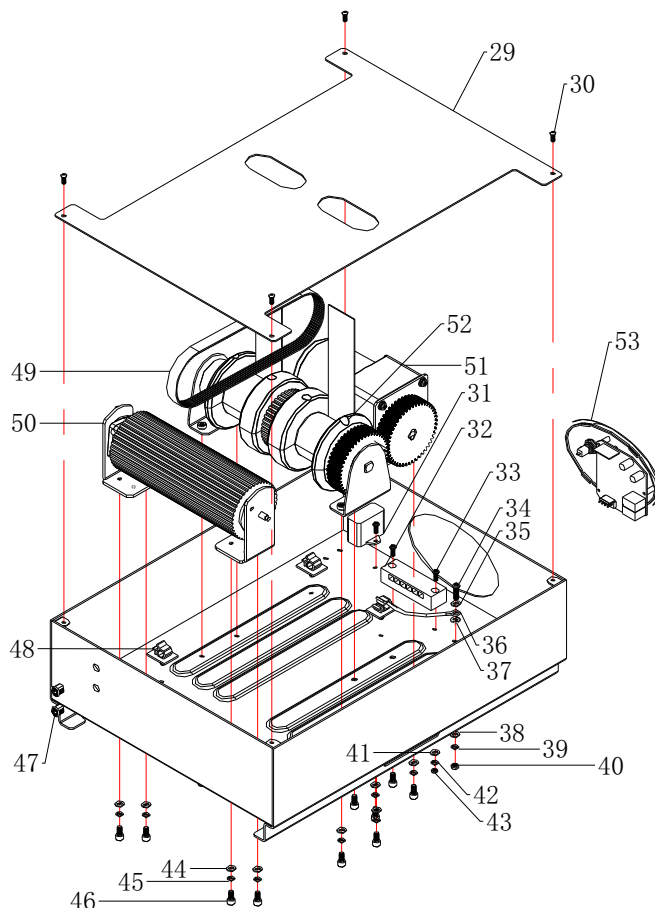
For avoiding dangerous, make sure the power off.

● Assembly maintenance figure



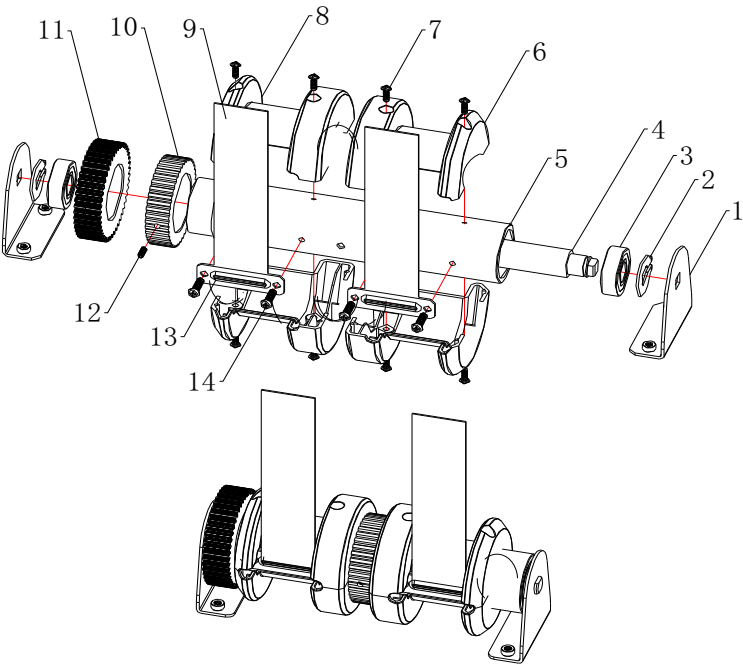
66	MPC1AP001S	Projector mounting bracket	1
65	EPL1AJ023S	M8*330 threaded mounting rod	4
64	EPL1AB016S	M8 flange nut	8
63	EPL1AB032S	M8 washer	8
62	WB0039B	Mounting rod cover	4
61	EPL1AJ018S	double belt strip	2
60	EPL1AB014S	M4*10 tumbler nail	4
59	EPL1AP003S	ceiling decoration pand	1
58	EPL1AP002S	lower casing	1
57	EPL1AP004S	connecting rod part	1
56	EPL1AP001S	upper casing	1
55	EPL1AJ014S	upper casing CP	1
54	EPL1AB032S	M10*60 expansion screw	4
Number	Items	Name	Quantity

● Upper casing maintenance figure



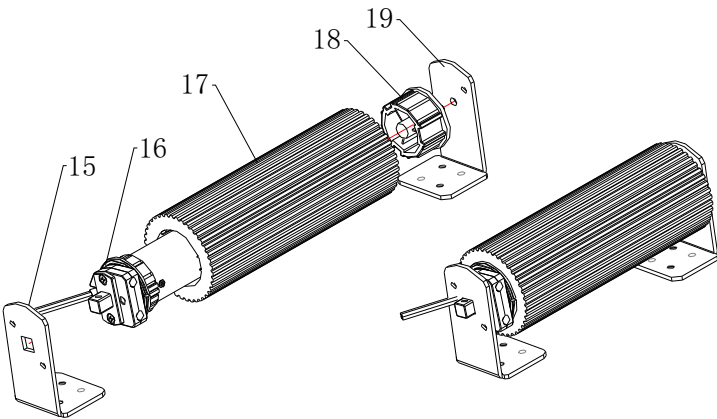
53	EPL1AP008S	receiver plate	1
52	EPL1AP007S	drive shaft part	1
51	EPL1AP006S	motor part	1
50	EPL1AP005S	rotating shaft	1
49	EPL1AB004S	Synchronous belt	1
48	EPL1AB020S	wire clamp	3
47	EPL1AB020S	Wire fixing ring	2
46	EPL1AB010S	M5*10 hexagonal screw	16
45	EBB0009T1S	M5 spring washer	16
44	EBB0008T1S	M5 washer	16
43	EPL1AB026S	M4 nut	3
42	EPL1AB025S	M4 spring washer	3
41	EPL1AB024S	M4 washer	3
40	EBB0001T1S	M5 nut	1
39	EBB0009T1S	M5 spring washer	1
38	EBB0008T1S	M5 washer	1
37	EBB0005T1S	external gear washer	1
36	EBB0006T1S	earth wire soldering lug	1
35	EBB0008T1S	M5 washer	1
34	EPL1AB013S	M5*15 pan head nail	3
33	EPL1AB023S	M4*10 pan head nail	3
32	EPL1AB019S	wire holder	1
31	EPL1AB021S	Capacitor	1
30	EPL1AB014S	M4*10 tumbler nail	4
29	EPL1AJ013S	upper casing plate	1
Number	Items	Name	Quantity

●Drive shaft maintenance figure



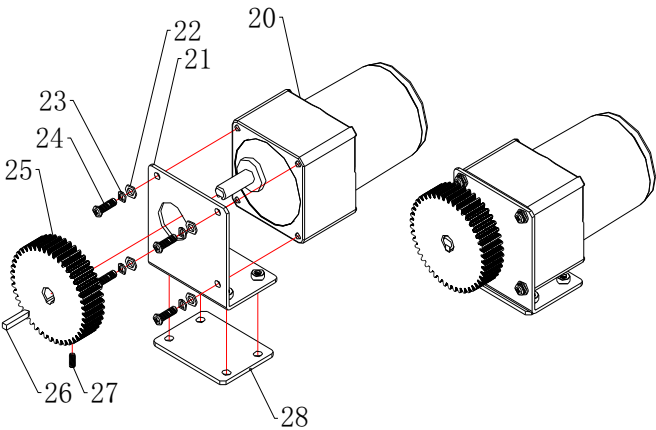
14	EPL1AB013S	M5*15 pan head nail	4
13	EPL1AJ015S	belt strip	2
12	EPL1AB022S	M4*10 grub screw	1
11	EPL1AJ026S	transmission gear	1
10	EPL1AL002S	auxiliary synchronous wheel	1
9	EPL1AB001S	tape coiling	2
8	EPL1AS003S	lower guide pulley	1
7	EPL1AB023S	M4*10 pan head nail	8
6	EPL1AS002S	upper guide pulley	1
5	EPL1AJ027S	transmission shaft set	1
4	EPL1AJ020S	transmission shaft	1
3	EPL1AB002S	Bearing	2
2	EPL1AB003S	Ø 13 axle card	2
1	EPL1AJ010S	bearing bracket	1
Number	Items	Name	Quantity

●Spain axle maintenance figure



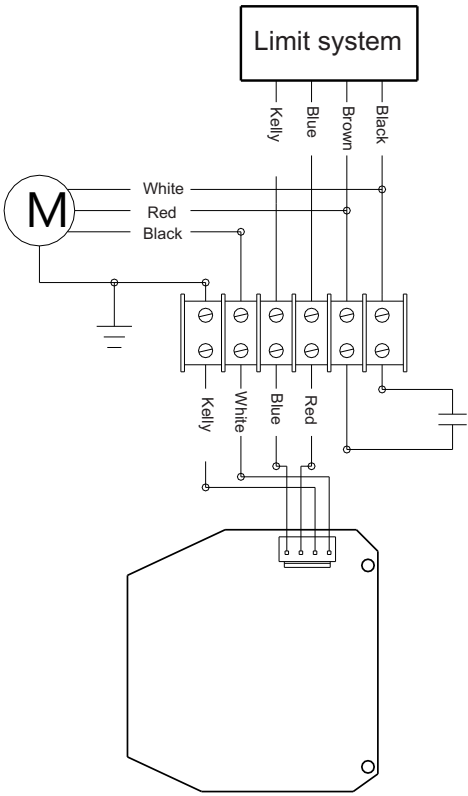
19	EKJ0001T1B	left bracket	1
18	EBS0011T1S	driven shaft	1
17	EPL1AL008S	spin axle	1
16	EBD0020T1S	limited machine	1
15	EKJ0002T1B	right bracket	1
Number	Items	Name	Quantity

●Motor maintenance figure












28	EPL1AJ028S	left bracket	1
27	EPL1AB022S	M4 grub screw	1
26	EPL1AB029S	motor square key	1
25	EPL1AJ025S	driving gear	1
24	EPL1AB013S	M5*15 pan head nail	4
23	EBB0009T1S	M5 spring washer	4
22	EBB0008T1S	M5 washer	4
21	EPL1AJ010S	motor holder	1
20	EPL1AB029S	Motor	1
Number	Items	Name	Quantity

● Circuits:



● Accessories:

Name	Picture	Quantity	remark
Expansivebolt		6	
Adjusting tool		1	
M3 x10 tumbler nail		5	
M4 x10 tumbler nail		5	
Hex key		1	
Code learning needle		1	
Hand held transmitter		1	
Trigger		1	Optional accessory
Power cord		5m	



EluneVision

A Division of Edith-Min International Inc

Tel: 1-905-296-6819

Fax: 1-905-627-9567

Web: www.EluneVision.com